



NORTHWEST YACHTS



President Triple Deck 115'

Make:	President	Hull Material:	Fiberglass
Model:	Triple Deck 115'	Draft:	6 ft 2 in
Length:	115 ft	Number of Engines:	2
Price:	USD 7,900,000	Fuel Type:	Diesel
Year:	2013	Number:	3751003
Condition:	New		
Location:	FOB Factory, Taiwan		

Description

The shipyard wants this boat sold.....Quality is superb!!! Compare with other similar sized vessels priced at 50% more.....

This President 115 Motoryacht is about 50% complete and is awaiting a new owner's final decorating and option selections.

Measurements

LOA: 115 ft 3 in

Northwest Yachts

Skyline Marina, 6060 Sands Way, Suite F, Anacortes, WA 98221, USA
Toll-free: 866-492-3138 Tel: 360-299-0777 sales@northwestyachts.com
<http://www.yachtworld.com/nwyachts>

LWL:	99 ft 3 in	Displacement:	286000 lb
Beam:	23 ft 8 in	Fuel Tanks Capacity:	5500 gal
Max Draft:	6 ft 2 in	Fresh Water Tanks Capacity:	800 gal

Propulsion

Number of Engines: 2
 Engine Make: Caterpillar
 Engine Model: C-32 Acert

Standard Power

- Twin Caterpillar[®] C-32Acert , diesel engines, rating 1800bhp x 2
- Northern Lights[®] generators with sound shield 2 set (M944W rating 30KW/60HZ x 1 and M1064D rating 40KW/60HZ x 1).
- Air conditioning system, Reverse cycle for cooling & heating; condensing units in engine room and cooling units for cabins
- Aqualoy[®] 22HS Propeller shafts, 4" diameter
- 5 Blade NiBral Propellers
- ABT Trac 370/16X' STAR(zero speed) stabilizer system
- ABT 16"-45HP Hydraulic bow thruster
- ABT 16"-45HP Hydraulic stern thruster

Hull and Superstructure

- CCP[®] 953WN099 gel coat, white color
- All fiberglass throughout the boat laid up by hand
- Modified V hull bottom
- Stitched multi-axial reinforced single skin hull bottom
- Hydrex vinyl ester resin for hull skin-coats
- Foam sandwich construction for hull topsides
- ATC[®] Corecell PVC foam sandwich construction in vacuum bag
- Transverse and longitudinal stringers glassed in the hull bottom
- The interior of hull bottom painted out in gelcoat
- Deck foam core construction

- The hull and deck are bolted and lamination with fiberglass together
- Non-skid deck surface
- International[®] epoxy osmosis protect primer
- Bottom paint anti-fouling, black standard
- Hull boot stripe, black standard
- Name of President at side w/LED back light

Electrical Equipment

- Glendenning[®] CM-8/24V.(100AMP) cable master shore power cable winder (2)
- Yellow vinyl jacketed shore power cable, 90 feet (2)
- Charles 93-ISOBOOST100-A, isoboost isolator 100A (2)
- Charles 93-ISOBOOST50-A, isoboost isolator 50A (1)
- Engine room blowers 120VAC, (4)
- Water heater w/heat exchanger 30 USG X 1, 40 USG X 1
- AC and DC circuit control breakers
- Navigation lights (5)
- Triple trump air horn
- Sealed maintenance free battery 255AH, (8) with fiberglass. battery boxes for service
- Sealed maintenance free battery 210AH, (4) with fiberglass battery boxes for engines
- Sealed maintenance free battery 105AH, (4) with fiberglass battery boxes for generators and 12VDC service
- Automatic bilge pump 24VDC (5) with automatic float switches & indicating lights and alarm system
- Bonding system with zinc anode on transom
- DOLPHIN #299716, 24VDC 80A battery charger
- DOLPHIN #299715, 12VDC 20A battery charger
- Intercom(4)
- Stereo wiring w/speakers (6)
- Ritchie[®] SS5000, flush mount compass(2)
- Color-coded wiring system
- On/off switch for engines & generator
- Emergency parallel switch between engines and service's battery bank

- EXALTO[®] wipers (3)
- CCTV in aft deck, swim platform and engine room. Screen on Nav. display of flybridge and pilothouse
- Engine room light 24VDC (6) and 120AC fluorescent light (7)
- ACR[®] RCL-300A remote control searchlight
- PAR #45900-0001 flood quartz halogen lamps(3), mounted in aft deck overhead

Mechanical Equipment

- Racor[®] , 75/1000 MAX, dual fuel filter for engines
- Racor[®] , 75/900MAX, dual fuel filter for generator
- Under water exhaust system with idle by pass mufflers
- Hydraulic power steering system
- Sea water strainer (2)
- Bronze thru-hull fitting
- Hot and cold water pressure system
- Stainless steel fresh water tank w/gauge (3)
- Watermaker Sea recovery[®] AQM 900, 900GPD
- Stainless steel shaft strut
- Dual shore water connection
- Bilge water level detectors(4)
- Electronic dual level engine controls
- Blower for each heads
- Aluminum fuel tank (painted with anti-rusting paint)
- Fiberglass holding tank with lever indicator (2)
- Macerator pump (2)
- Y valve for heads
- Sump tank with pump 3 set
- Fresh water pressure system with pump (3)
- Engine room fire detector AQUALARM #204 series
- Reverso[®] GP705, oil change system for main engines and generators
- Fireboy[®] MA2-3000-FM200, fire extinguishing system with manual and automatic discharge
- Stainless steel engine footing

Flybridge

- Radar arch with 24VDC light
- FRP non-skid deck surface
- A full size BBQ cabinet on stbd. side w/ice maker/refrigerator.
- Tinted venture windshield with grab rail
- Molded instrument console w/complete instrumentation and s/s cover
- Electronic dual level engine controls
- Steering wheel S/S 20"
- Pompanette single hi-lo pilot chair (1)
- L-shape bench seats with vinyl cushions and storage beneath on port side w/a fixed fiberglass table and a full size sun-bathe mattress aftward
- A large double counter wet bar and storage beneath on stbd. side
- Waterproof speakers (2)
- Intercom(1)
- 120VAC waterproof receptacle (1)
- Courtesy light(6)
- S/S handrail
- Hydraulic davit 600 KG
- Stairs down to pilot house

Pilothouse

- Maple/Cherry cabin sole
- Lower station with complete instrumentation
- Wooden/stainless steel steering wheel 20"
- Pompanette single hi-lo pilot chair (2)
- L-settee with table
- Lockers/cabinet
- 24VDC recess light (12)
- 120VAC outlet (3)
- Stair steps down to salon w/railing
- Air conditioning system
- Port side door

Pilothouse Sky Lounge

- Stainless steel automatic access door to P/H rear deck
- U shape sofa and 2 coffee tables with 3 single arm chairs
- Cabinet and wiring for stereo
- 24VDC recess lights (6)
- 120VAC recess light (10)
- 120VAC receptacles (4)
- Round dinette table with 4 chairs
- Air conditioning 24,000 BTU
- Double counter wet bar with sink and faucet(granite counter top)
- Automatic ice maker
- Private doors to head and pilot house
- TV cabinet with remote ele. lifter
- Curtain for windows and access door
- Carpeted floor

Pilothouse Sky Lounge Day Head

- Medicine cabinet with mirror
- Headhunter[®] super bowl toilet (1)
- Granite cabin sole
- 24VDC light (6)
- 120VAC receptacles (2)
- Granite counter top
- Basin with single lever faucet (2)

Aft Pilothouse Deck

- Fiberglass integrated staircase to F/B
- FRP non-skid floor
- Automatic stainless steel glass door to upper master room
- Stainless steel stanchion and railing
- Teak hi-lo table w/eight single chairs
- Two stainless steel poles - 5½"

- Exterior speaker (2)
- Flag pole socket (1)
- Teak ensign flag 6 ft (1)

Forward and Side of Main Deck

- Twin S/S navy anchor (230 lbs each)
- Twin stem head rollers with automatic anchor launch facility
- 5/8" HT chain, 300ft (2)
- Two mooring bollards forward with rope fairleads
- Rub rail with stainless steel trim
- S/S hawse pipe with spring cleat (8)
- Chain locker with fiberglass hatch(1)
- Half-round seats w/a round FRP hi-lo table
- Fiberglass windows frame with tempered seamless glasses
- Fresh water wash down faucet (1)
- Raw water wash down faucet (1)
- Flag pole socket (1)
- Teak ensign flag 30" length (1)
- Teak deck floor
- 316 S/S stanchions & handrails
- Maxwell[®] VWC 4500HYD windlass (2) with hand held control & chain counter
- Fore deck storage locker for fenders and ropes

Aft of Main Deck

- Teak deck floor
- Extend hard top over deck with stainless steel pipe supports - 5½"
- S/S mooring cleat (2)
- S/S hawse pipe with roller (2)
- Maxwell VC2200 vertical electric winches (2)
- Automatic S/S frame salon access sliding door
- Fresh water wash down faucet (1)
- Raw water wash down faucet (1)
- Transom shower hot & cold water

- Two S/S swivel stairs on both side down to Aft body swim platform
- Teak stairs from aft deck to swim platform
- Teak stairs from aft deck to aft pilot house deck
- 120VAC GFCI waterproof receptacle (1)
- Hard top lights (10)
- Courtesy light 24VDC (6)
- Fiberglass bulwark door (2)
- 316 S/S stanchions & handrails
- Fiberglass bench with vinyl cushions on back side
- Access door to crew quarter and engine room
- Wet bar with covered sink and refrigerator/ice maker
- Oval teak table w/two S/S fixed stands and 8 teak chairs

Interior

- 8" spring mattress and standard fabric
- Teak wood interior wall covering with satin finishing
- Varnished marine plywood cabinsole with standard carpets throughout upper master room ,salon and fwd lower staterooms
- Teak/holly cabin sole for crew quarter
- Oak stripe sheet for galley and dinette
- Vinyl on ceiling
- Standard fabrics curtains

Forward Dinette

- Oak stripe sheet cabin sole
- U type dinette seat and cushion w/back cabinet for storage
- Two dinette tables w/stainless steel stand
- Forward art wall in front of dinette seat
- Pantograph side door on port & starboard side
- 120VAC receptacles (4)

Galley

- Oak stripe sheet cabin sole

- Electric 30" cook top
- Microwave
- Side by side refrigerator
- Dish washer
- Built-in electric single oven
- Trash compactor
- Garbage disposal
- Wine cooler
- Stainless steel double sink
- Single lever kitchen faucet
- 24VDC lights
- 120VAC receptacles (3)
- Drawers
- Granite double counter top
- Air conditioning

Salon

- Carpeted cabin sole
- Stereo and DVD player cabinet in entertainment center
- 24VDC lights
- 120VAC receptacles (6)
- Salon "L" settee in leather w/one lamp counter & table (1)
- Arm chair (2)
- Dinette table with chairs (10)
- Art cabinet in fwd side w/storage underneath
- 50" TV cabinet with remote ele. Lifter
- Double granite counter wet bar with ice maker/refrigerator
- Automatic stainless steel frame salon access sliding door
- Air conditioning 32,000 BTU
- Teak stairs up to pilot house w/railing

Salon Day Head

- Medicine cabinet w/mirror (1)

- Headhunter[®] super bowl toilet
- Granite cabin sole
- Art corner shelves
- 24VDC lights
- 120VAC receptacle (1)
- Granite counter top
- Basin with faucet

Forward VIP Stateroom

- Berth w/storage under
- Hanging locker (2)
- S/S frame opening portlight (2)
- Private door to head
- Carpeted floor
- 24VDC light (8)
- 120VAC receptacles (2)
- Drawers
- Air conditioning

Forward VIP Head

- Medicine cabinet w/mirror (1)
- Headhunter[®] super bowl toilet.
- Granite cabin sole
- 24VDC light (6)
- 120VAC receptacle (1)
- Granite counter top
- Basin with faucet
- Stall shower glass door with granite floor

Lower Lobby and Laundry Room

- Granite lower lobby floor
- Teak stairs with railing up to salon
- 24VDC light (6)

- Washer & dryer under the work counter in laundry room
- Drawers and storage locker under the counter
- Teak/holly floor
- Air conditioning

Lower Master Stateroom

- Double open doors to lower lobby
- Walk around king size berth with storage under
- Night tables with two drawers on both side of berth
- Dressing room w/locker inside
- Private door to head
- 24VDC light (14)
- 120VAC receptacles (4)
- Drawers counter of both side
- S/S frame opening portlight (4)
- Curtain for both side port holes
- Seat w/cushion on starboard side
- Air conditioning
- Carpeted floor

Lower Master Head

- Medicine cabinet with mirror
- Mirror integrated with granite wall
- Headhunter super bowl toilet
- Granite cabin sole
- S/S opening portlight (2)
- 24VDC lights
- 120VAC receptacles (4)
- Granite counter top
- Basin with faucet (2)
- Stall shower with granite floor
- Jacuzzi tub

Starboard Aft VIP Stateroom

- Twin berth with storage under
- Night table between twin berth w/drawer underneath
- Hanging locker (1)
- S/S frame opening portlight
- Private door to head
- 24VDC lighting
- 120VAC receptacles (2)
- Air conditioning

Starboard Aft VIP Head

- Medicine cabinet w/mirror (1)
- Headhunter super bowl toilet
- Granite cabin sole
- 24VDC lighting
- 120VAC receptacle (1)
- Granite counter top
- Basin with faucet
- Stall shower glass door with granite floor

Port Side Aft VIP Stateroom

- Double berth with storage under
- Night table on both sides of berth w/drawer underneath
- Hanging locker (1)
- S/S frame opening portlight
- Private door to head
- 24VDC lighting
- 120VAC receptacles (2)
- Air conditioning

Port Side Aft VIP Head

- Medicine cabinet w/mirror (1)

- Headhunter super bowl toilet
- Granite cabin sole
- 24VDC lighting
- 120VAC receptacle (1)
- Granite counter top
- Basin with faucet
- Stall shower glass door with granite floor

Starboard Crew Cabin

- Upper & lower berth
- Teak/holly cabin sole
- Hanging locker (1)
- Storage under berth
- Private door to head
- S/S frame opening portlight (2)
- 24VDC lighting
- 120VAC outlet (2)
- Air conditioning

Starboard Crew Head

- Headhunter royal flush toilet
- Teak/holly sole
- Stall shower glass door with fiberglass non-skid floor
- 24VDC lighting
- 120VAC receptacle (1)
- Granite counter top
- Basin and faucet
- Medicine cabinet w/mirror

Port Side Crew Cabin

- Double berth with storage under
- Teak/holly cabin sole
- Hanging locker (1) w/side cabinet

- Private door to head
- S/S frame opening portlight (2)
- 24VDC lighting
- 120VAC outlet (1)
- Air conditioning

Port Side Crew Head

- Headhunter royal flush toilet
- Teak/holly sole
- Stall shower glass door with fiberglass non-skid floor
- 24VDC lighting
- 120VAC receptacle (1)
- Granite counter top
- Basin and faucet
- Medicine cabinet w/mirror

Utility Room

- Teak stairs up to aft deck
- Teak/holly floor
- Washer/dryer on port side
- Access teak door to utility room
- 120VAC receptacle (2)
- Lower counter lockers

Crew Galley

- Access door to swim platform
- Teak/holly floor
- Granite counter top
- S/S frame opening portlight
- S/S frame watertight engine room access door
- Air conditioning
- Refrigerator
- Stainless steel single sink with faucet

- Electric 2 burner cook top
- Microwave
- Dinette seat w/cushion and a fixed teak table

Optional Equipment

- Navigation equipment
- Forward deck fog bell
- Hot tub on flybridge
- FRP hard top over flybridge
- Stainless steel hand railing on P/H side & forward bulwark
- Integrated stairs with S/S railing from forward deck bench up to P/H with 2 sets of “L” seat and triangle FRP table on both sides
- Two new style large porthole window on the hull side
- Automatic beach step ladder under swim platform
- F/lybridge S/S bar stools
- Boarding - step ladder

Disclaimer

The Company offers the details of this vessel in good faith but cannot guarantee the accuracy of this information. Specifications are under review and subject to change. A buyer should instruct his agents, or his surveyors, to investigate such details as the buyer desires validated. This vessel is offered subject to prior sale, price change, or withdrawal without notice.

Photos



Underway



Stern 2



Aft Deck



Pilothouse



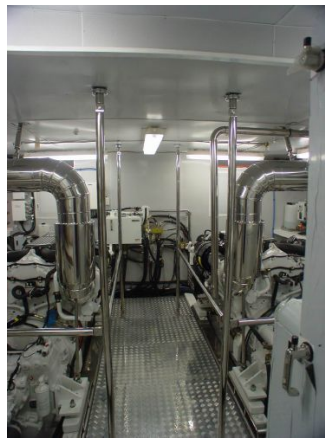
Galley



Salon/Galley



Stateroom



Engine Room